



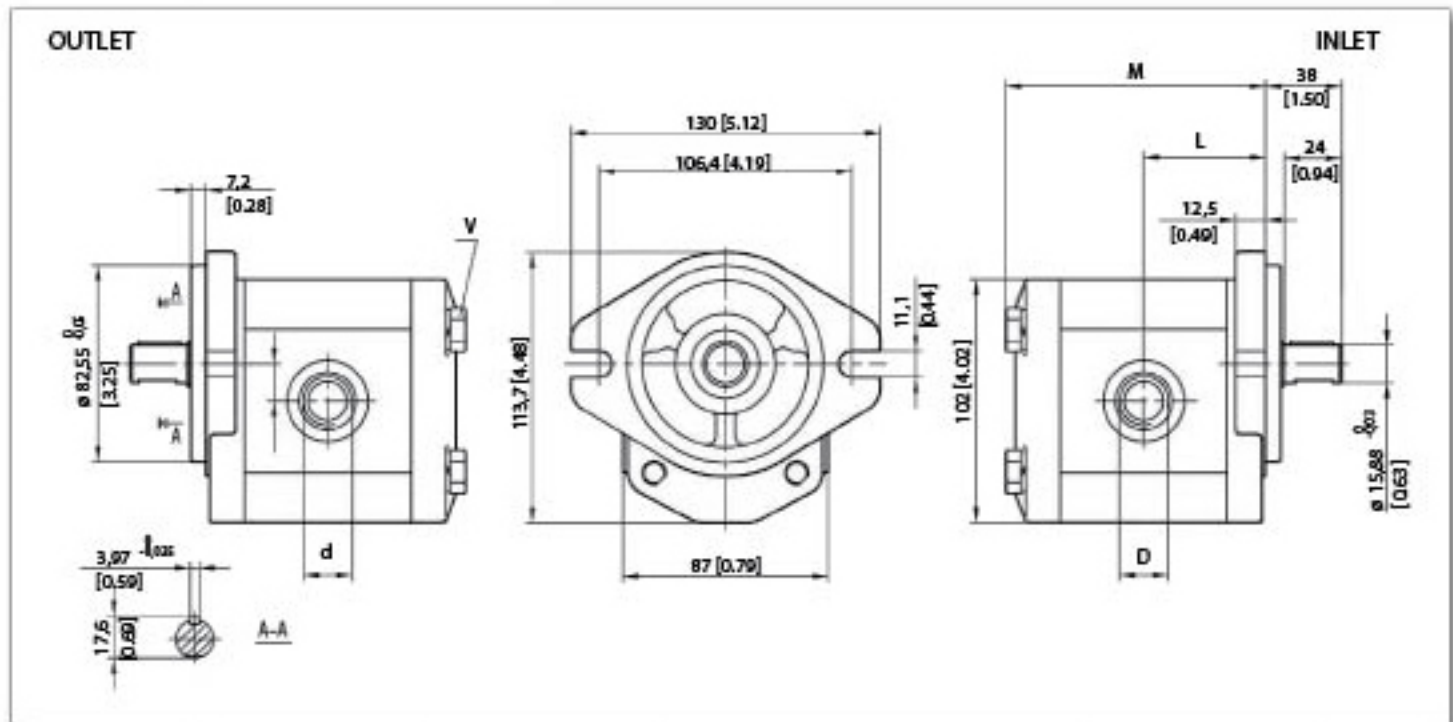
## YBH Series Pumps Side Ports

YBH series pumps are a proven design featuring cast iron front mounting flange and rear cover with an extruded aluminum body.

These pumps provide high volumetric efficiency, smooth operation and high pressure capability. They are configured and manufactured to precise industry standards for mounting and ports, with a variety of shafts options. YBH pumps are suitable for both mobile and industrial applications.

### NOTES

1. Pressure and suction ports are machined in compliance with SAE J1926/1 (ISO J1926-1)
2. M10 screws are recommended for mounting the pump with torque to 70-75 Nm [52 to 55 lb-ft]



MAX PRESSURE RATING: 270 BAR [4350 PSI]  
MAXIMUM SPEED: 4000 RPM

Type	Displacement		Max pressure						Max speed r/min	Min speed r/min	Dimension					
	cm <sup>3</sup> /rev	inc/	P1		P2		P3				M		L		D	d
			bar	PSI	bar	PSI	bar	PSI			mm	inch	mm	inch		
YBHP2A0-D-3	3	0.18	270	3915	285	4133	300	4350	4000	800	91.1	3.59	43.6	1.72	11/16-12UNF	7/8-14UNF
YBHP2A0-D-4	4	0.24	270	3915	285	4133	300	4350	4000	600	92.7	3.65	44.4	1.75	11/16-12UNF	7/8-14UNF
YBHP2A0-D-6	6	0.37	270	3915	285	4133	300	4350	4000	600	96.0	3.78	46.0	1.81	11/16-12UNF	7/8-14UNF
YBHP2A0-D-8	8	0.49	270	3915	285	4133	300	4350	3500	500	99.3	3.91	47.7	1.88	11/16-12UNF	7/8-14UNF
YBHP2A0-D-10	10	0.61	270	3915	285	4133	300	4350	3000	500	102.6	4.04	49.3	1.94	11/16-12UNF	7/8-14UNF
YBHP2A0-D-12	12	0.73	270	3915	285	4133	300	4350	3000	500	105.9	4.17	51.0	2.01	11/16-12UNF	7/8-14UNF
YBHP2A0-D-14	14	0.85	250	3625	265	3843	280	4060	4000	500	109.3	4.30	52.7	2.07	11/16-12UNF	7/8-14UNF
YBHP2A0-D-16	16	0.98	250	3625	265	3843	280	4060	4000	500	112.7	4.44	54.4	2.14	11/16-12UNF	7/8-14UNF
YBHP2A0-D-18	18	1.10	250	3625	265	3843	280	4060	3600	400	116.0	4.57	56.0	2.20	11/16-12UNF	7/8-14UNF
YBHP2A0-D-20	20	1.22	220	3190	235	3408	250	3625	3200	400	119.3	4.70	57.7	2.27	11/16-12UNF	7/8-14UNF
YBHP2A0-D-22	22	1.34	220	3190	235	3408	250	3625	3000	400	122.6	4.83	59.3	2.33	11/16-12UNF	7/8-14UNF
YBHP2A0-D-25	25	1.53	200	2900	215	3118	230	3335	3000	400	127.6	5.02	61.8	2.43	11/16-12UNF	7/8-14UNF
YBHP2A0-D-28	28	1.71	180	2610	190	2755	200	2900	2500	400	132.6	5.22	64.3	2.53	11/16-12UNF	7/8-14UNF
YBHP2A0-D-30	30	1.83	180	2610	170	2465	180	2610	2500	400	135.9	5.35	66.0	2.60	15/16-12UNF	7/8-14UNF





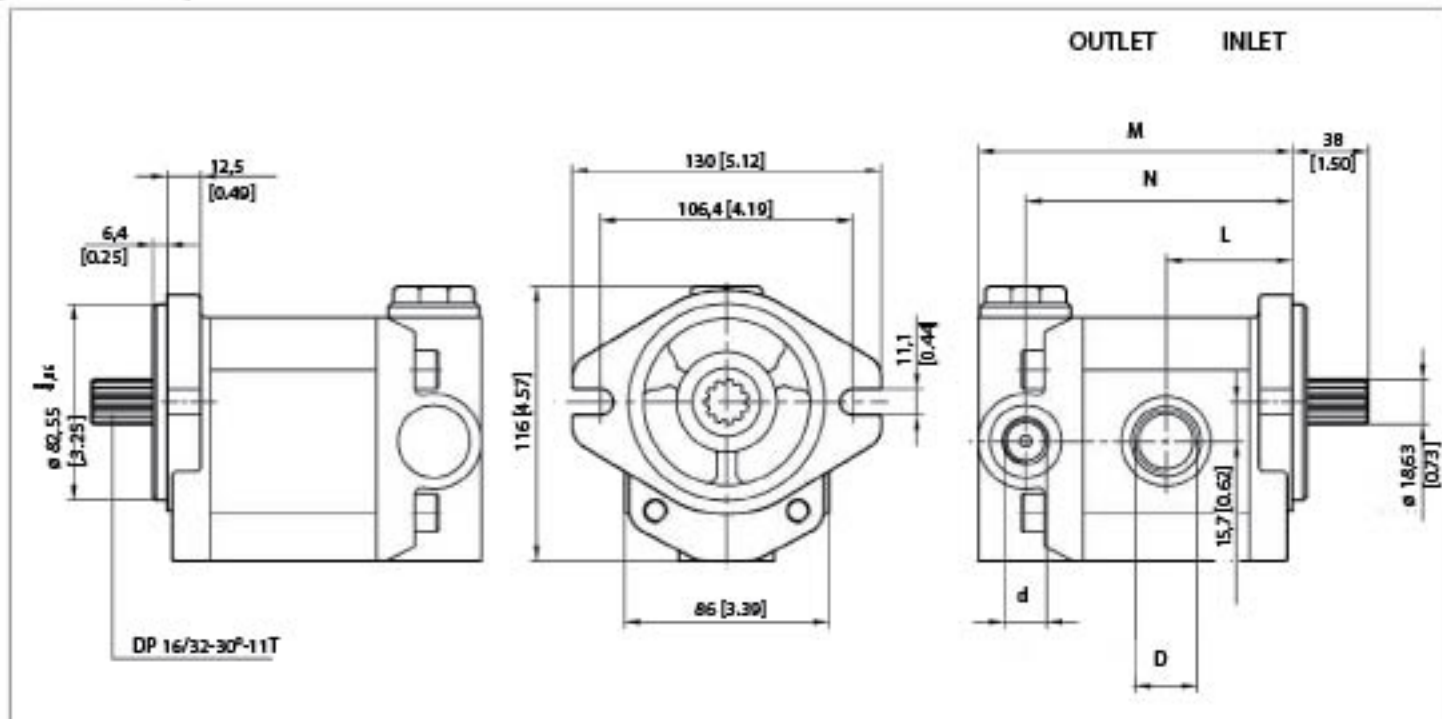
## YBHV Series Pumps with Integrated Valve

YBH series pumps are a proven design featuring cast iron front mounting flange and rear cover with an extruded aluminum body.

These pumps provide high volumetric efficiency, smooth operation and high pressure capability. They are configured and manufactured to precise industry standards for mounting and ports, with a variety of shafts options. YBH pumps are suitable for both mobile and industrial applications.

### NOTES

1. Pressure and suction ports are machined in compliance with SAE J1926/1 (ISO J1926-1)
2. M10 screws are recommended for mounting the pump with torque to 70-75 Nm [52 to 55 lb-ft]



MAX PRESSURE RATING: 180 BAR [4350 PSI]  
MAXIMUM SPEED: 4000 RPM

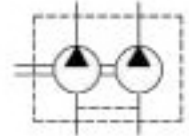
Type	Displacement		Control pressure P1	Control flow Qconst	Max speed r/min	Min speed r/min	Dimension							
	cm <sup>3</sup> /rev	inc/rev					M	L	N		D	d		
YBHP2A0-D-3-Fx	3	0.18	100... 180	2...30	4000	800	112,1	4.41	43,6	1.72	92,1	3.63	1 1/16-12UNF	7/8-14UNF
YBHP2A0-D-4-Fx	4	0.24			4000	600	113,7	4.48	44,4	1.75	93,7	3.69	1 1/16-12UNF	7/8-14UNF
YBHP2A0-D-6-Fx	6	0.37			4000	600	117,0	4.61	46,0	1.81	97,0	3.82	1 1/16-12UNF	7/8-14UNF
YBHP2A0-D-8-Fx	8	0.49			3500	500	120,3	4.74	47,7	1.88	100,3	3.95	1 1/16-12UNF	7/8-14UNF
YBHP2A0-D-10-Fx	10	0.61			3000	500	123,6	4.87	49,3	1.94	103,6	4.08	1 1/16-12UNF	7/8-14UNF
YBHP2A0-D-12-Fx	12	0.73			3000	500	126,9	5.00	51,0	2.01	106,9	4.21	1 1/16-12UNF	7/8-14UNF
YBHP2A0-D-14-Fx	14	0.85			4000	500	130,3	5.13	52,7	2.07	110,3	4.34	1 1/16-12UNF	7/8-14UNF
YBHP2A0-D-16-Fx	16	0.98			4000	500	133,7	5.26	54,4	2.14	113,7	4.48	1 1/16-12UNF	7/8-14UNF
YBHP2A0-D-18-Fx	18	1.10			3600	400	137,0	5.39	56,0	2.20	117,0	4.61	1 1/16-12UNF	7/8-14UNF
YBHP2A0-D-20-Fx	20	1.22			3200	400	140,3	5.52	57,7	2.27	120,3	4.74	1 1/16-12UNF	7/8-14UNF
YBHP2A0-D-22-Fx	22	1.34			3000	400	143,6	5.65	59,3	2.33	123,6	4.87	1 1/16-12UNF	7/8-14UNF
YBHP2A0-D-25-Fx	25	1.53			3000	400	148,6	5.85	61,8	2.43	128,6	5.06	1 1/16-12UNF	7/8-14UNF
YBHP2A0-D-28-Fx	28	1.71			2500	400	153,6	6.05	64,3	2.53	133,6	5.26	1 1/16-12UNF	7/8-14UNF
YBHP2A0-D-30-Fx	30	1.83			2500	400	156,9	6.18	66,0	2.60	136,9	5.39	1 5/16-12UNF	7/8-14UNF



## YBH Series Tandem Pumps

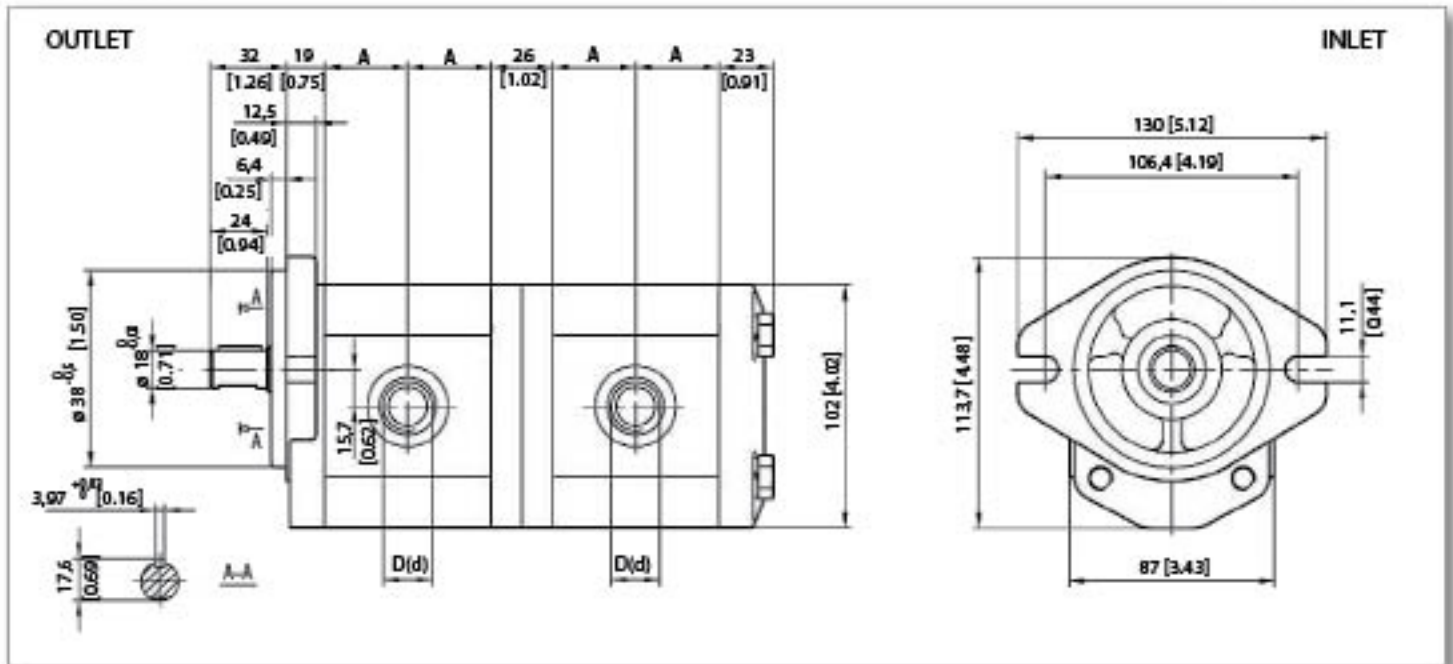
YBH series pumps are a proven design featuring cast iron front mounting flange and rear cover with an extruded aluminum body.

These pumps provide high volumetric efficiency, smooth operation and high pressure capability. They are configured and manufactured to precise industry standards for mounting and ports, with a variety of shaft options. YBH pumps are suitable for both mobile and industrial applications.



### NOTES

1. Pressure and suction ports are machined in compliance with SAE J1926/1 (ISO J1926-1)
2. M10 screws are recommended for mounting the pump with torque to 70-75 Nm [52 to 55 lb-ft]

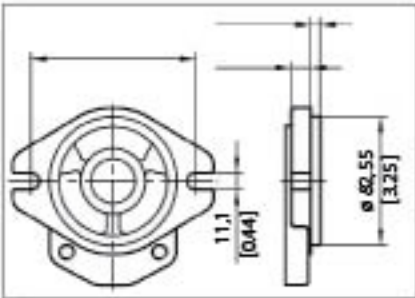


MAX PRESSURE RATING: 270 BAR [4133 PSI]  
 MAXIMUM SPEED: 4000 RPM

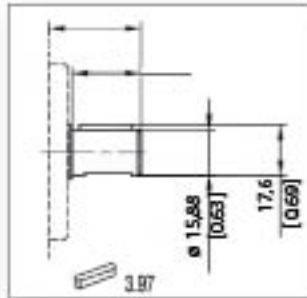
Displacement		Max pressure						Max speed	Min speed	Dimension		Inlet	Outlet
cm <sup>3</sup> /rev	in <sup>3</sup> /	P1		P2		P3				A			
		bar	PSI	bar	PSI	bar	PSI	r/min	r/min	mm	inch	D mm	d mm
3	0.18	270	3915	285	4133	300	4350	4000	800	24.5	0.96	1 1/16-12 UNF	7/8-14 UNF
4	0.24	270	3915	285	4133	300	4350	4000	600	25.3	1.00	1 1/16-12 UNF	7/8-14 UNF
6	0.37	270	3915	285	4133	300	4350	4000	600	27.0	1.06	1 1/16-12 UNF	7/8-14 UNF
8	0.49	270	3915	285	4133	300	4350	3500	500	28.6	1.13	1 1/16-12 UNF	7/8-14 UNF
10	0.61	270	3915	285	4133	300	4350	3000	500	30.3	1.19	1 1/16-12 UNF	7/8-14 UNF
12	0.73	270	3915	285	4133	300	4350	3000	500	32.0	1.26	1 1/16-12 UNF	7/8-14 UNF
14	0.85	250	3625	265	3843	280	4060	4000	500	33.3	1.31	1 1/16-12 UNF	7/8-14 UNF
16	0.98	250	3625	265	3843	280	4060	4000	500	35.3	1.39	1 1/16-12 UNF	7/8-14 UNF
18	1.10	250	3625	265	3843	280	4060	3600	400	37.0	1.46	1 1/16-12 UNF	7/8-14 UNF
20	1.22	220	3190	235	3408	250	3625	3200	400	38.6	1.52	1 1/16-12 UNF	7/8-14 UNF
22	1.34	220	3190	235	3408	250	3625	3000	400	40.3	1.59	1 1/16-12 UNF	7/8-14 UNF
25	1.53	200	2900	215	3118	230	3335	3000	400	42.8	1.69	1 1/16-12 UNF	7/8-14 UNF
28	1.71	180	2610	190	2755	200	2900	2500	400	45.3	1.78	1 1/16-12 UNF	7/8-14 UNF
30	1.83	160	2320	170	2465	180	2610	2500	400	47.0	1.85	1 5/16-12 UNF	7/8-14 UNF

FRONT COVER

SHAFTS

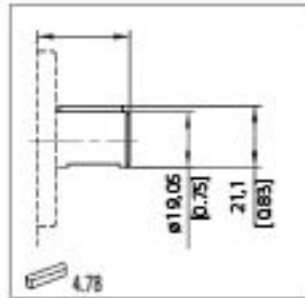


A0



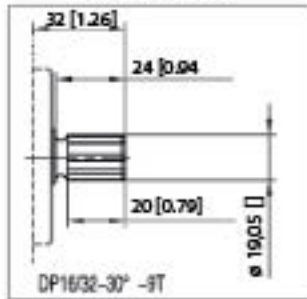
C0

Max Torque 140 Nm  
[103.6 lb/ft].



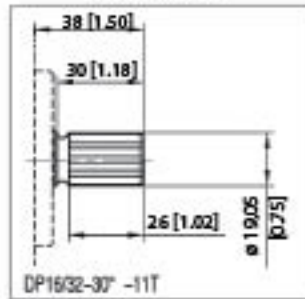
C1

Max Torque 160 Nm  
[118.4 lb/ft].



S0

Max Torque 185 Nm  
[136.9 lb/ft].



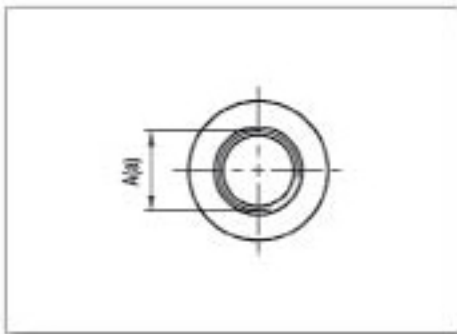
S1

Max Torque 200 Nm  
[148 lb/ft].

**Shaft Table**

- CO = 5/8" Keyed
- C1 = 3/4" Keyed
- SO = 5/8" 9T Splined
- S1 = 3/4" 11T Splined

PORTS



F0/F1

Type	PORTS CODE	INLET	OUTLET
		a	b
YBA(H)P2...3 + YBA(H)P2...26	U0	1 1/16-12UNF	7/8-14 UNF
YBA(H)P2...30	U1	1 5/16-12UNF	7/8-14 UNF

HOWTO ORDER

YBA	P	2	Front Cover	Rotation	Size	Shaft	Ports	Port position	Seals	Options
Series	Pump	Group	A0	D	3					
				Clockwise	4					
			B0	S	5					
				Counter Clockwise	6					
			B1	R	8					
				Reversible	10					
			B2		12					
			Q0		14					
			Q1		16					
			Q2		18					
					20					
					22					
					25					
					28					
					30					

PORTS POSITION

Omit	Side Inlet and side outlet
A	Front inlet and front outlet
B	Back inlet and front outlet
C	Back inlet and side outlet
D	Side inlet and front outlet
R	Back inlet and back outlet

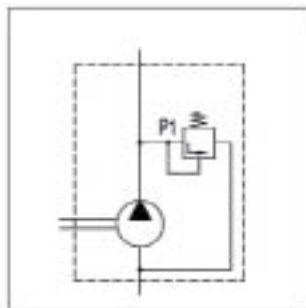
Shaft Table

CO = 5/8" Keyed  
 C1 = 3/4" Keyed  
 SO = 5/8" 9T Splined  
 S1 = 3/4" 11T Splined

SEALS

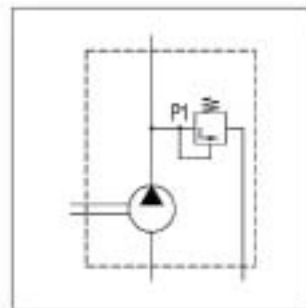
Omit	Range between -10°C and +80°C inlet pressure up to max. 3 bar absolute.
V	Version suitable for fluid at hi-temperatures, range between -10°C and +120°C
H	Version suitable for fluid at low-temperature, range between -40°C and +80°C
T	Version suitable for inlet pressure up to max 3 and 6 bar absolute.
N	Version suitable for inlet pressure up to max 3 and 10 bar absolute.

OPTIONS



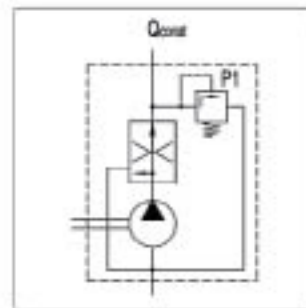
Pressure relief valve.  
 Discharge returned to suction.  
 P1=5...250 bar  
 [73...3625 psi  
 Ordering Code:

Y	180xx
---	-------



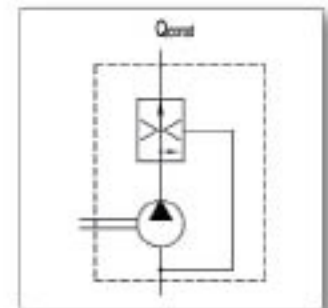
Pressure relief valve.  
 Discharge returned to externally.  
 P1=5...250 bar  
 [73...3625 psi  
 Ordering Code:

P	120xx
---	-------



3-way flow control valve with pressure relief valve.  
 Excess flow returned to suction  
 P1=100...180 bar  
 [1450...2610 psi  
 Ordering Code:

F	15015
---	-------



3-way flow control valve  
 Excess flow returned to suction  
 Qconst=2...30 L/min  
 ??????  
 Ordering Code:

Q	xxx15
---	-------

EXAMPLE

YBAP2-B0-D-2-TO-E0

clockwise rotation, 3 cc/rev, B0 front cover, 1:8 tapered shaft (T0), setting ports E0 type, standard seals

# MULTIPLE PUMPS

## HOW TO ORDER

YBH	P	2/2/2	Front Cover	Rotation	16/16/6	Shaft	Ports	Port position	Seals	Options
Series	Pump	Group	A0	D	Size					
			B0	Clockwise	3					
			B1	S	4					
			B2	Courter Clockwise	6					
			Q0	R	8					
			Q1	Reversible	10					
			Q2		12					
					14					
					16					
					18					
					20					
					22					
					25					
					28					
					30					

### PORTS POSITION

Omit Side	Inlet and side outlet
A	Front inlet and front outlet
B	Back inlet and front outlet
C	Back inlet and side outlet
D	Side inlet and front outlet
R	Back inlet and back outlet

### SEALS

Omit	Range between -10°C and +80°C inlet pressure up to max. 3 bar absolute.
V	Version suitable for fluid at hi-temperatures, range between -10°C and +120°C
H	Version suitable for fluid at low-temperature, range between -40°C and +80°C
T	Version suitable for inlet pressure up to max 3 and 6 bar absolute.
N	Version suitable for inlet pressure up to max 3 and 10 bar absolute.

### EXAMPLE

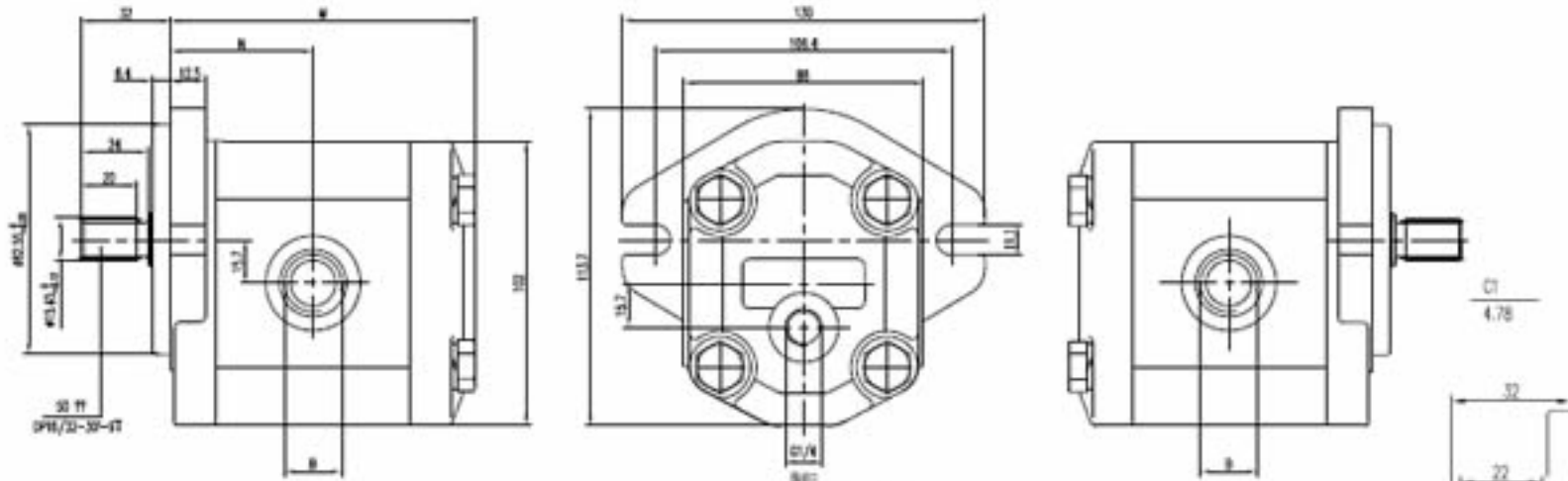
YBHP2/2/2-B0-D-16/6/6-T0-E0

clockwise rotation, group 2, front pump 16 cc/rev, middle pump 16 cc/rev, rear pump 6 cc/rev, B0 front cover 1:8 tapered shaft (T0), setting ports E0 type, standard seals

# YBHM2AOR MOTORS



OUTLET



YBHM2A0R3	3	23	24	25.5	4000	91.1	43.6	
YBHM2A0R4	4	23	24	25.5	4000	92.7	44.4	
YBHM2A0R5	5	23	24	25.5	4000	94.4	45.2	
YBHM2A0R6	6	23	24	25.5	4000	96	46	
YBHM2A0R7	7	23	24	25.5	4000	97.7	46.9	
YBHM2A0R8	8	23	24	25.5	3500	99.3	47.7	
YBHM2A0R9	9	23	24	25.5	3000	101	48.5	
YBHM2A0R10	10	23	24	25.5	3000	102.6	49.3	
YBHM2A0R11	11	23	24	25.5	3000	104.3	50.2	
YBHM2A0R12	12	23	24	25.5	3000	105.9	51	1-1/16-12UNF
YBHM2A0R14	14	21	22	23.5	4000	109.3	52.7	
YBHM2A0R16	16	21	22	23.5	4000	112.7	54.4	
YBHM2A0R17	17	21	22	23.5	3600	114.3	55.2	
YBHM2A0R18	18	21	22	23.5	3600	116	56	
YBHM2A0R19	19	21	22	23.5	3200	117.7	56.9	
YBHM2A0R20	20	19	20	21.5	3200	119.3	57.7	
YBHM2A0R22	22	19	20	21.5	3000	122.6	59.3	
YBHM2A0R25	25	17	18	19.5	2800	127.6	61.8	
YBHM2A0R28	28	16	17	18.5	2500	132.6	64.3	
YBHM2A0R30	30	14	15	16.5	2500	135.9	66	1-5/16-12UNF
	ml/r	Pc(Mpa)	Pi(Mpa)	Pp(Mpa)	r/min	M	N	B

